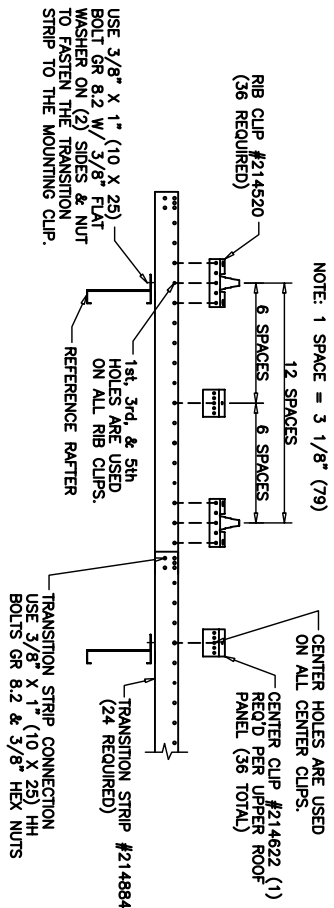
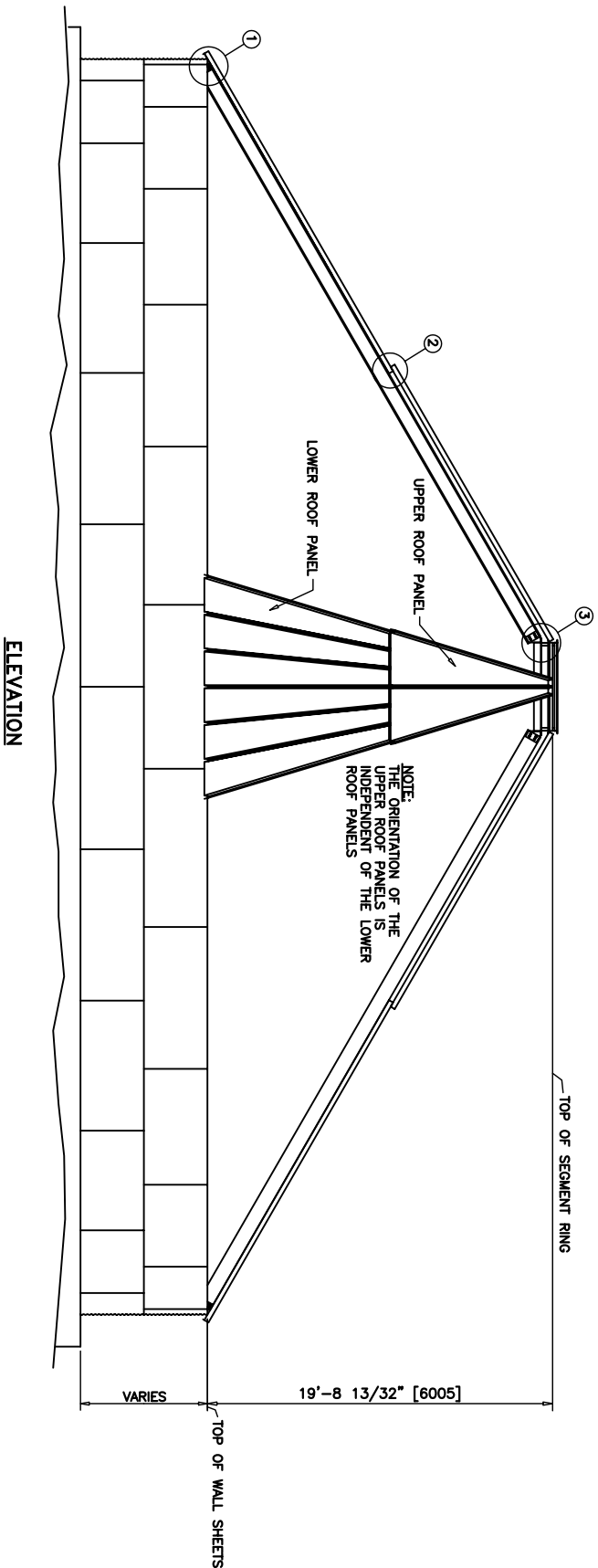


REV.	BY	DATE	DESCRIPTION OF CHANGE	REV.
EPR	4/1/02	WAS SK58553D		
CHKD	JSD	14SEP00		
APPROVED	JT	20SEP00	SCALE: NTS	SHEET 2 OF 3

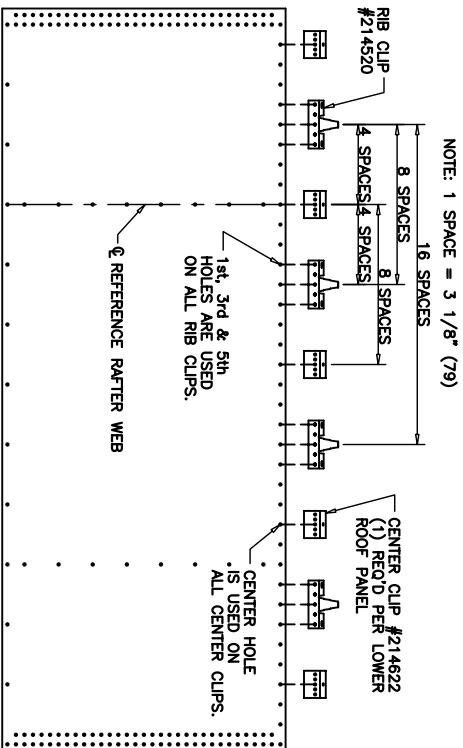
SCAFECO
Scaffolding Systems Company
8200 E. Main Avenue
Spokane, WA 99211-1515, USA
Tel: 509-325-1571 • Fax: 509-325-9130 • info@scafecho.com • www.scafecho.com

72' DIAMETER BIN

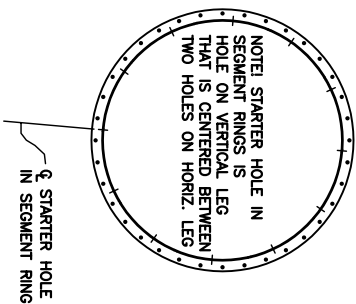
ROOF ERECTION INSTRUCTIONS
(60" DIAMETER PEAK OPENING)



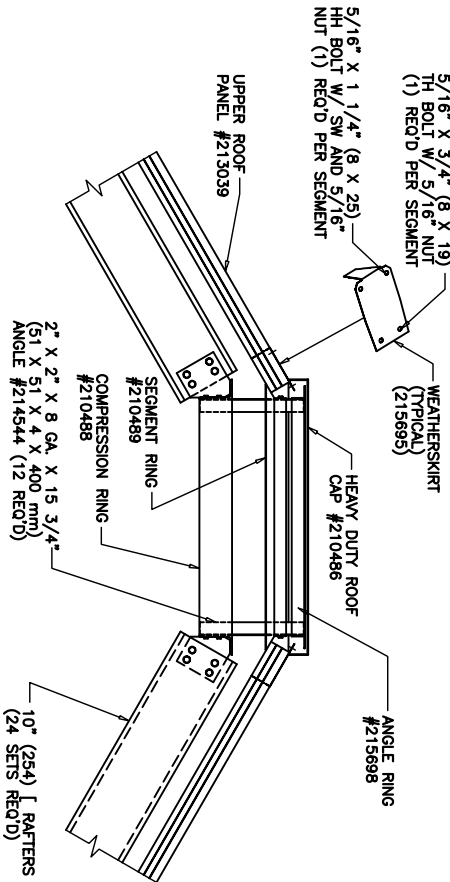
VIEW OF TRANSITION STRIP BETWEEN UPPER & LOWER ROOFS



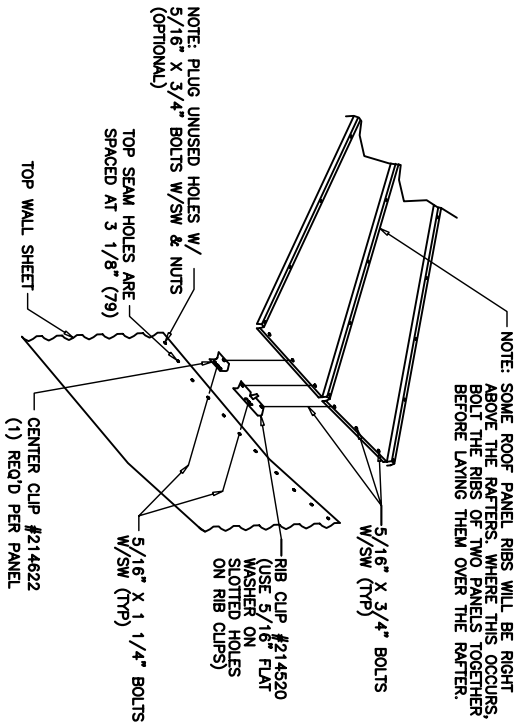
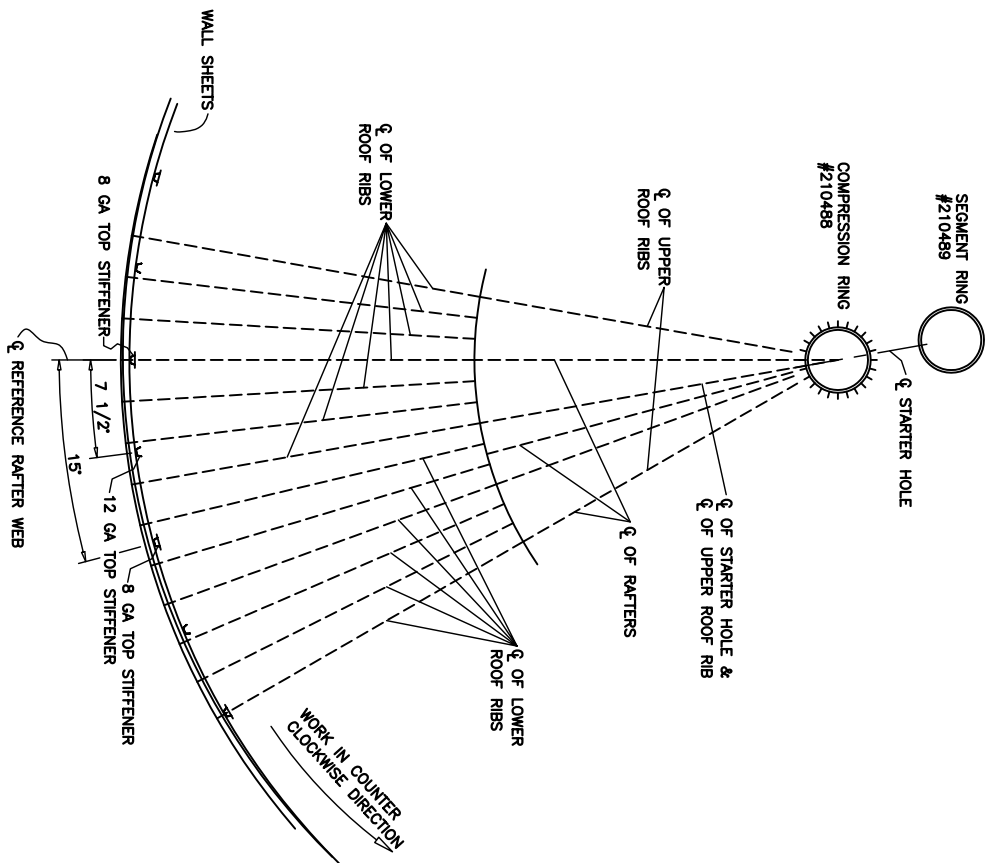
VIEW SHOWING CENTER & RIB CLIP CONNECTION TO TOP WALL SHEET



NOTES: FIELD WELD OR BOLT THE
ROOF CAP #210486 TO ANGLE RING #215698.
BOLT STARTER HOLE TO BOLT GAIN THE
CLOCKING RECOMMENDED SEGMENTS.
INDIVIDUAL WEATHERSKIRT SEGMENTS.



SECTION THRU ROOF CAP



RIB/CENTER CLIP DETAIL

REV	BY	DATE	DESCRIPTION OF CHANGE	REV
EPR	4/1/02	WAS	SK5853D	
DOAWN	JSD	14SEP00		
CHECKED				
APPROVED	JT	20SEP00	SCALE: NTS	SHEET 3 OF 3

SCAFECO
Scaffold Erecting Company
6200 E. Main Avenue
Spokane, WA 99211-1215, USA
Tel: 509-325-1571 • Fax: 509-325-9130 • info@scafeco.com • www.scafeco.com

72' DIAMETER BIN
ROOF ERECTION INSTRUCTIONS
(60" DIAMETER PEAK OPENING)

72R00F-60RC